

IDENTIFICATION OF SPOTTED LANTERN FLIES

HOW DO WE KNOW?



<https://extension.illinois.edu/blogs/good-growing/2023-09-27-spotted-lanternfly-new-invasive-insect-be-aware>

First instar nymphs measure about 1/4 inch in length and are noted by their black color with white spots. These can sometimes be mistaken for ticks. The appearance of the second and third instar phases are similar with the main difference being a change in length as the lantern fly grows.



<https://massnrc.org/pests/blog/?p=2772>

Fourth instar Spotted Lantern Flies measure about 3/4 inch in length.

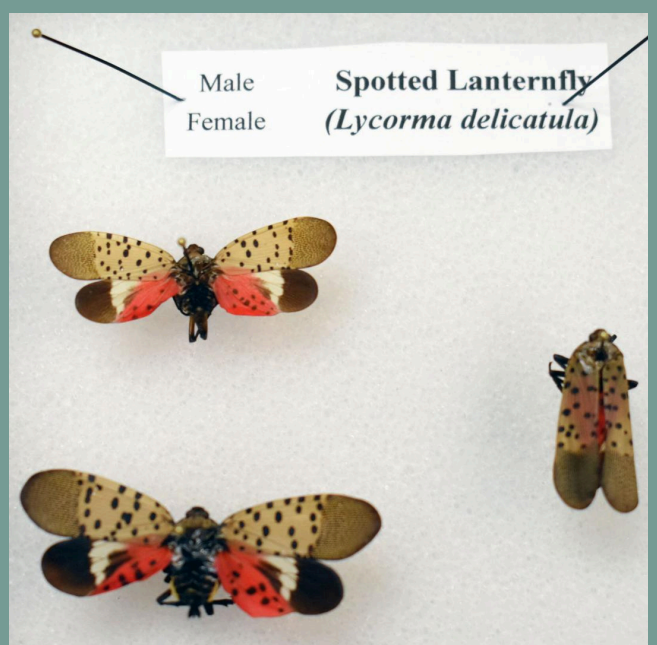
They adorn a red color with patches of black and white spots. They sometimes are mistaken for spiders. This is the phase before adulthood.



Image courtesy of Gregory Hoover

<https://ag.umass.edu/landscape/fact-sheets/spotted-lanternfly>

Adult Spotted lantern flies measure around 1 inch in length and have a red and tan coloration to their wings which can appear pinkish-tan when closed. Adults have yellow and black striped abdomens.



https://www.gettytsburgtimes.com/news/local/image_0b020678-2471-5d4e-a23d-f237003cbe7d.html

Female Spotted Lantern flies are slightly larger in size than males. They have a red spot on the last segment of their abdomen as shown in the picture. This is the best indicator of a female Lantern fly. This will swell when females have mated making it difficult for them to fly.



<https://alternativeearthcare.com/residential-spotted-lanternfly-identification-and-spraying-control-services/>